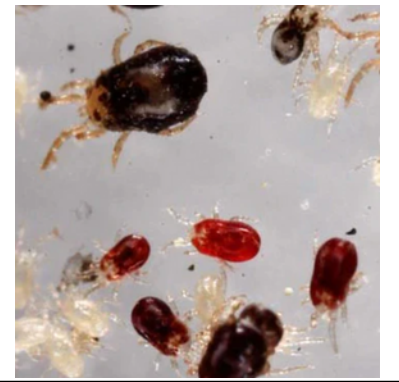
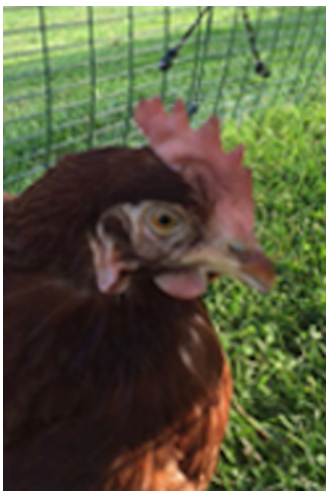


Red Mite



Red mites live in the cracks and crevices of the chicken house and come out to feed on the birds' blood at night. It is a common problem in warm weather when it breeds rapidly and can kill chickens within weeks if left untreated.



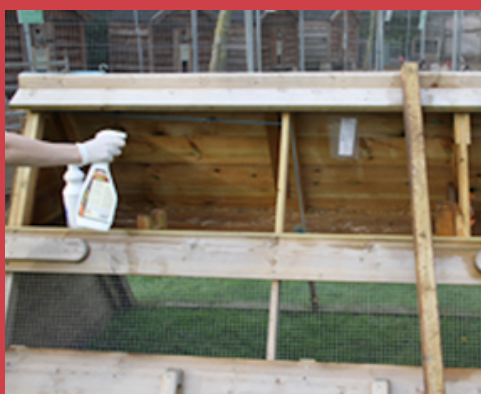
Signs of Redmite

- Hens reluctant to go in to the hen house at night (they will often roost on top of the hen house).
- Comb and wattles change from a dark red to a pale pink.
- Feeling itchy after you've been in the hen house.
- Drop in egg production.
- Grey ash like deposit on the perches and in seams and joints.
- Seeing tiny cream/grey or dark red mites.

To Treat Mild Red Mite or Preventative Treatment

1. Remove all bedding from chicken house. Bag up & seal.
2. Scrape away any dried droppings
3. Soak inside the house with a liquid mite killer such as Smite or Nettex Mite Spray.
4. Allow to dry.
5. Puff Diatomaceous Earth powder all around the house.
6. Replace bedding and add more DE powder.

Repeat weekly.



To Treat A Heavy Infestation

1. Block up all gaps in chicken house.
2. Set off a Insecticidal Smoke Bomb.
3. Carefully bag up and remove bedding - either place it in a sealed bag or ideally burn immediately.
4. Scrape out all dried droppings.
5. Soak inside of the house with liquid mite killer such as Smite or Nettex Mite Spray & leave to dry.
6. *Optional* - Spray the inside of the house thoroughly with Perbio Choc.
7. Puff Diatomaceous Earth powder around the house.
9. Replace bedding and add more DE powder.

Repeat weekly until no evidence of mites are found. After this follow steps 3-8 weekly.